

# THE URBAN TREE HOUSE 2009000029

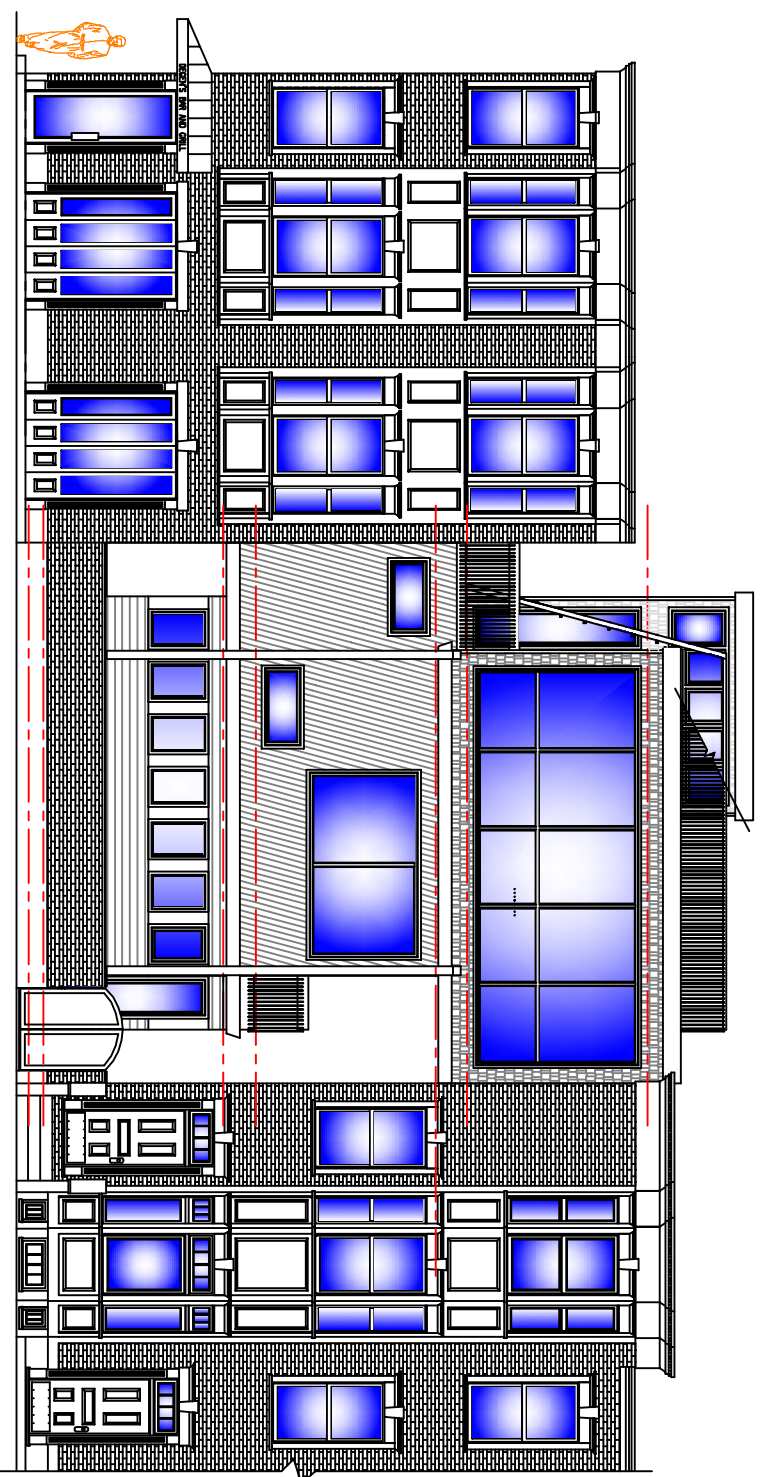


CONDITIONED SPACE = 2205 SQ.  
 NON-CONDITIONED SPACE = 567 SQ.  
 TOTAL = 2772 SQ.

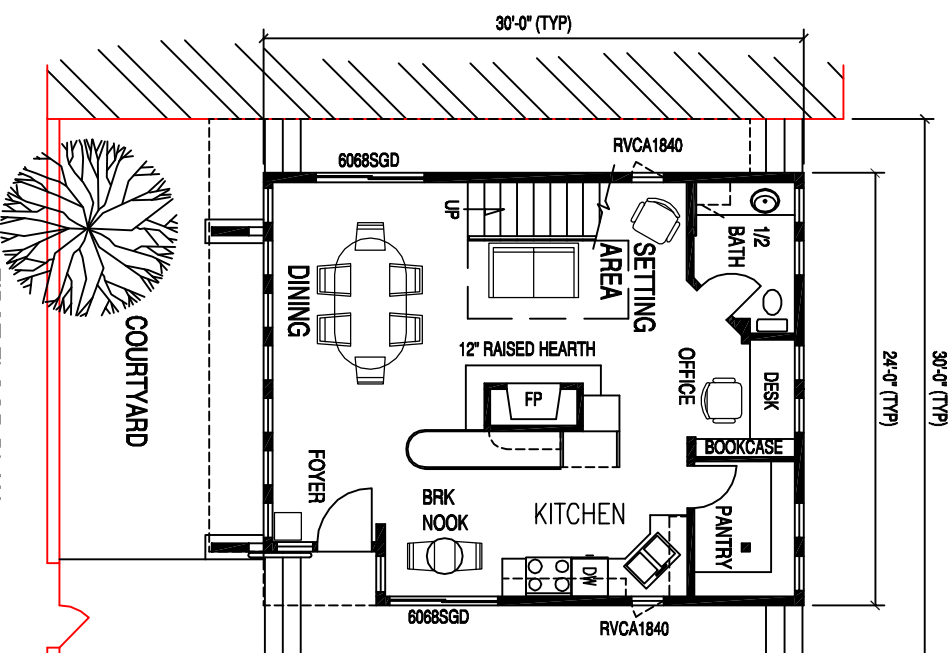
**SPECIAL NOTES...**

AS A CHILD I SPENT CONSIDERABLE TIME CLIMBING TREES. I LOVED TO CLIMB HIGH INTO THE CANOPY AND VIEW THE WORLD FROM A DIFFERENT PERSPECTIVE. IT WAS NOT JUST THE VIEW FROM THE TOP BUT THE GLIMPSES OF WHAT WAS TO COME AS THE LEAVES AND BRANCHES GAVE WAY TO VIEWS BEYOND MY BACKYARD THAT EXCITED ME. I CAN STILL FEEL THE SOLIDNESS OF THE TRUNK UNDER FOOT AND THE GRACEFUL SWAY OF THE UPPER BRANCHES AS I CLUNG TIGHT TO THEM IN THE BREEZE. I BUILT MANY "TREE HOUSES" AS A CHILD, BUT THAT WAS ONLY A MEANS TO STAY IN THE TREE LONGER. IT WAS THE TREE THAT I LOVED AND THAT IS THE ESSENCES THAT I WANTED TO CAPTURE IN THIS DESIGN.

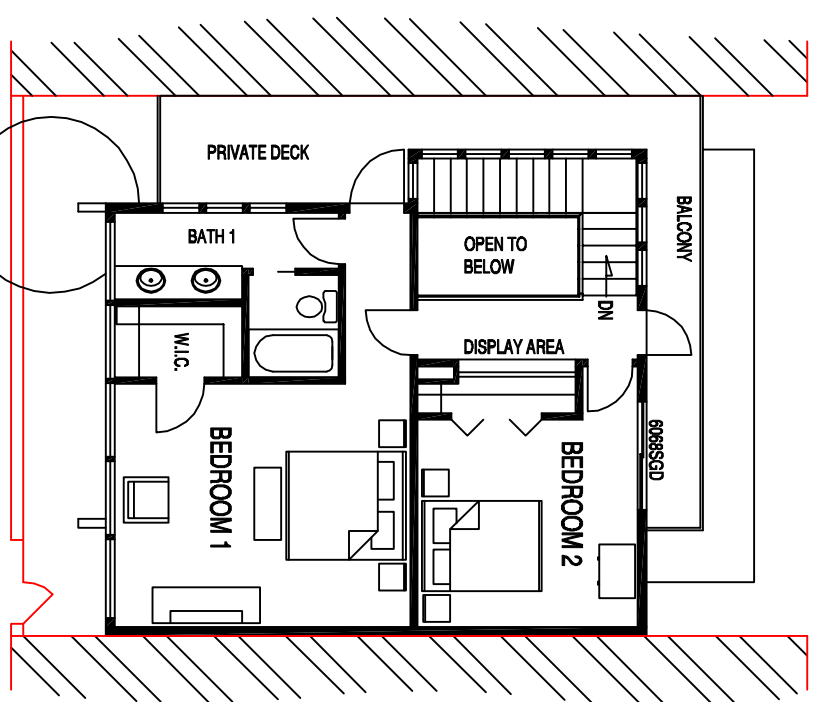
- THIS COMPACT DESIGN COULD BE PLACED ON A LOT AS SMALL AS 30'X38'.
- THE OPEN STAIR DESIGN WITH THE CLEARSTORY WINDOWS FLOODS THE HOME WITH LIGHT AND PROVIDES NATURAL VENTILATION AND COOLING.
- THE CENTRAL FIREPLACE ON THE FIRST FLOOR PROVIDES WARMTH AND A SPECIAL DESIGN ELEMENT WHEN COMBINE WITH THE CLIMBING HELIX DESIGN OF THE KITCHEN CABINETRY.
- HIGH WINDOWS ON THE FIRST FLOOR PROVIDE LIGHT BUT RESTRICT VIEWS FROM STREET LEVEL. AS ONE CLIMBS TO THE UPPER LEVELS THE WINDOWS OPEN UP FIRST WITH GLIMPSES, BUT EVENTUALLY UNRESTRICTED VIEWS LIKE THOSE OF A TREE.
- INTEGRATED BALCONIES, PASSAGEWAYS AND DECKS BLUR THE LINE BETWEEN INDOOR AND OUT MAKING THE COMPACT DESIGN FEEL MUCH LARGER THAN THE 2205 SQUARE FEET OF CONDITIONED SPACE IT HOLDS.
- THE STRUCTURE OF THIS DESIGN IS CELEBRATED RATHER THAN HIDDEN. LIKE THE BRANCHES OF A TREE THE SUPPORT STRUCTURE ON THE SECOND FLOOR IS EXPOSED AND PART OF THE SPACE.



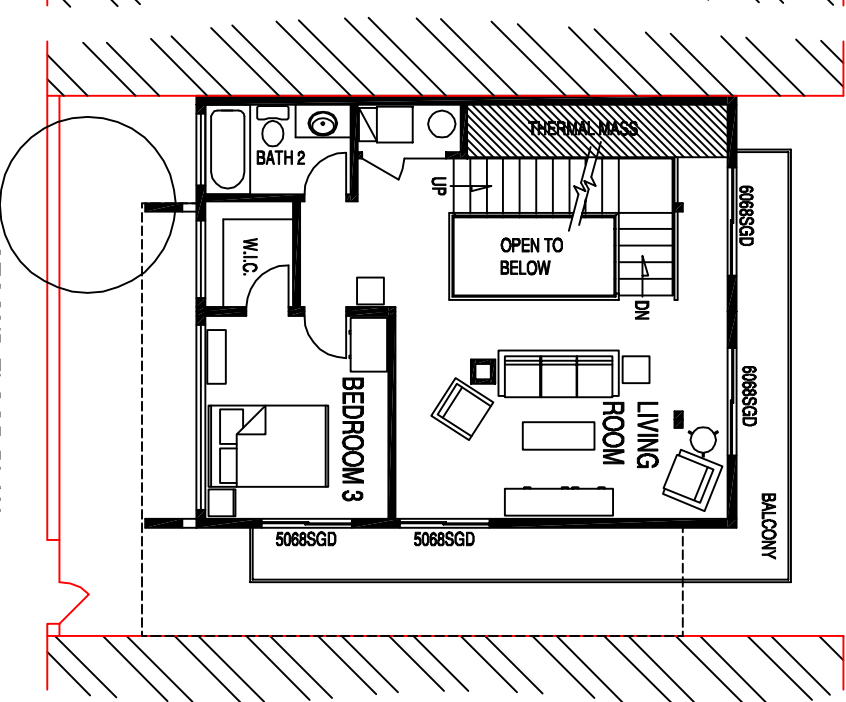
FRONT ELEVATION



FIRST FLOOR PLAN



THIRD FLOOR PLAN



SECOND FLOOR PLAN

THIS DRAWING AND DESIGN IS THE PROPERTY OF EXCEL HOMES, LLC, © 2009. ANY REPRODUCTION OF THE DRAWING OR DESIGN IS PROHIBITED WITHOUT THE EXPRESS WRITTEN CONSENT OF EXCEL HOMES, LLC.

