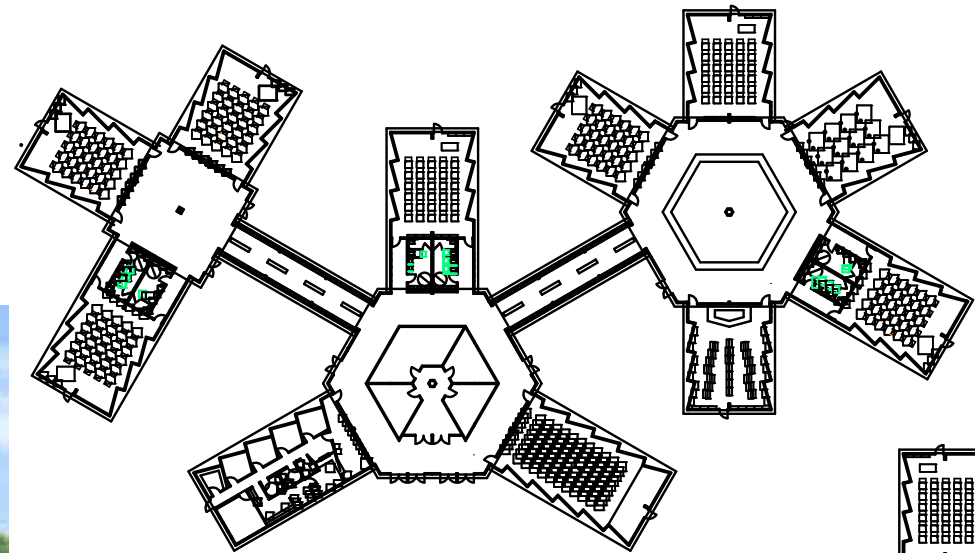


# SCHOOL AND OFFICE DESIGNS

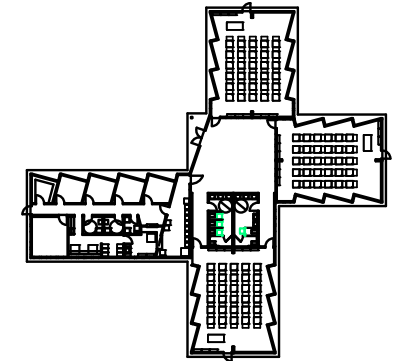


OFFICE UNIT

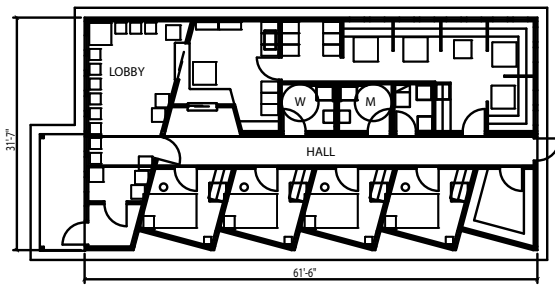


EXPANDABLE SCHOOL CONCEPT

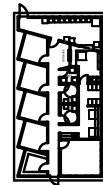
- SINGLE UNIT TO MULTI-POD CONFIGURATIONS
- EXPAND AND REARRANGE AS THE COMMUNITY NEEDS CHANGE
- DESIGNED FOR CURRENT AND FUTURE TECHNOLOGIES



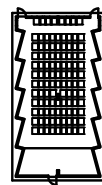
CAREER CENTER



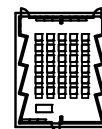
OFFICE UNIT



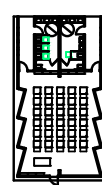
OFFICE UNIT



LECTURE HALL



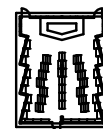
CLASSROOM STYLE ONE



CLASSROOM STYLE TWO



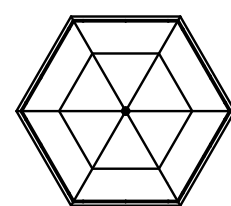
CLASSROOM STYLE THREE



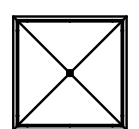
LIBRARY



HALL



CONNECTION UNIT ONE



CONNECTION UNIT TWO

## BASIC BUILDING BLOCKS



©2009 Excel Homes LLC. This design (including all text, images, graphics, plans and renderings) is wholly owned by Excel Homes LLC. Unless otherwise specified, users may view and print the contents only for their own use, provided that all print-outs of the contents bear the copyright and other proprietary notices and disclaimers as displayed on them on the site.

Other than as specified above, none of the contents may be modified or copied in whole or part in any form, including by framing, incorporation into other websites or other publications, or be used to create any derivative work by any other company with the exception of Pavone Advertising. None of Excel Homes LLC's trademarks may be used without prior written permission. Excel Homes LLC reserves all its rights in such trademarks.